

FINISH OPTIONS:

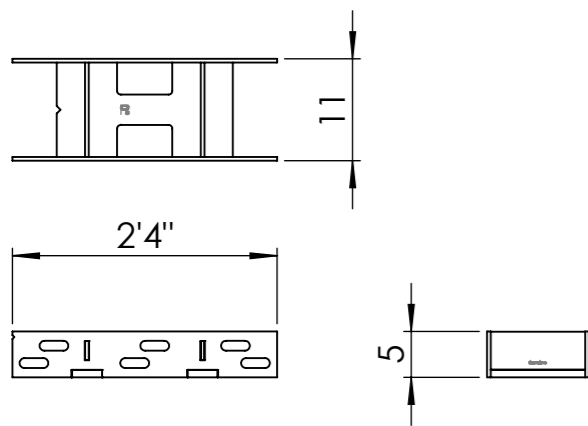
- ZINC PRIMED AND POWDER COATED
- MILD STEEL GALVANISED AND POWDER COATED SLEEVE
- STAINLESS STEEL SLEEVE (BRUSHED OR BEAD BLASTED)
- FERROCAST (VARIOUS OPTIONS AVAILABLE)

AVAILABLE WITH FLAT/MITRED AND DOMED TOPS
WITH OR WITHOUT GROOVES
WITH OR WITHOUT CLASS 2 REFLECTIVE TAPE

NOTES:

- 1) FOUNDATION DETAIL FOR INDICATIVE PURPOSES ONLY. PRODUCT TO BE INSTALLED IN ACCORDANCE WITH MARSHALLS SPECIFICATION.
- 2) PRODUCT TO BE INSTALLED IN A MINIMUM RUN OF 3 UNITS. FOR HVM COMPLIANCE BOLLARD TO BOLLARD CLEAR GAP MUST NOT EXCEED 47.25 "
- 3) ADJOINING UNITS CONNECTED WITH SUPPLIED BRACKET AND FIXINGS.
- 4) PRODUCT MANUFACTURED FROM S355 MILD STEEL.

CONNECTION BRACKET DETAIL

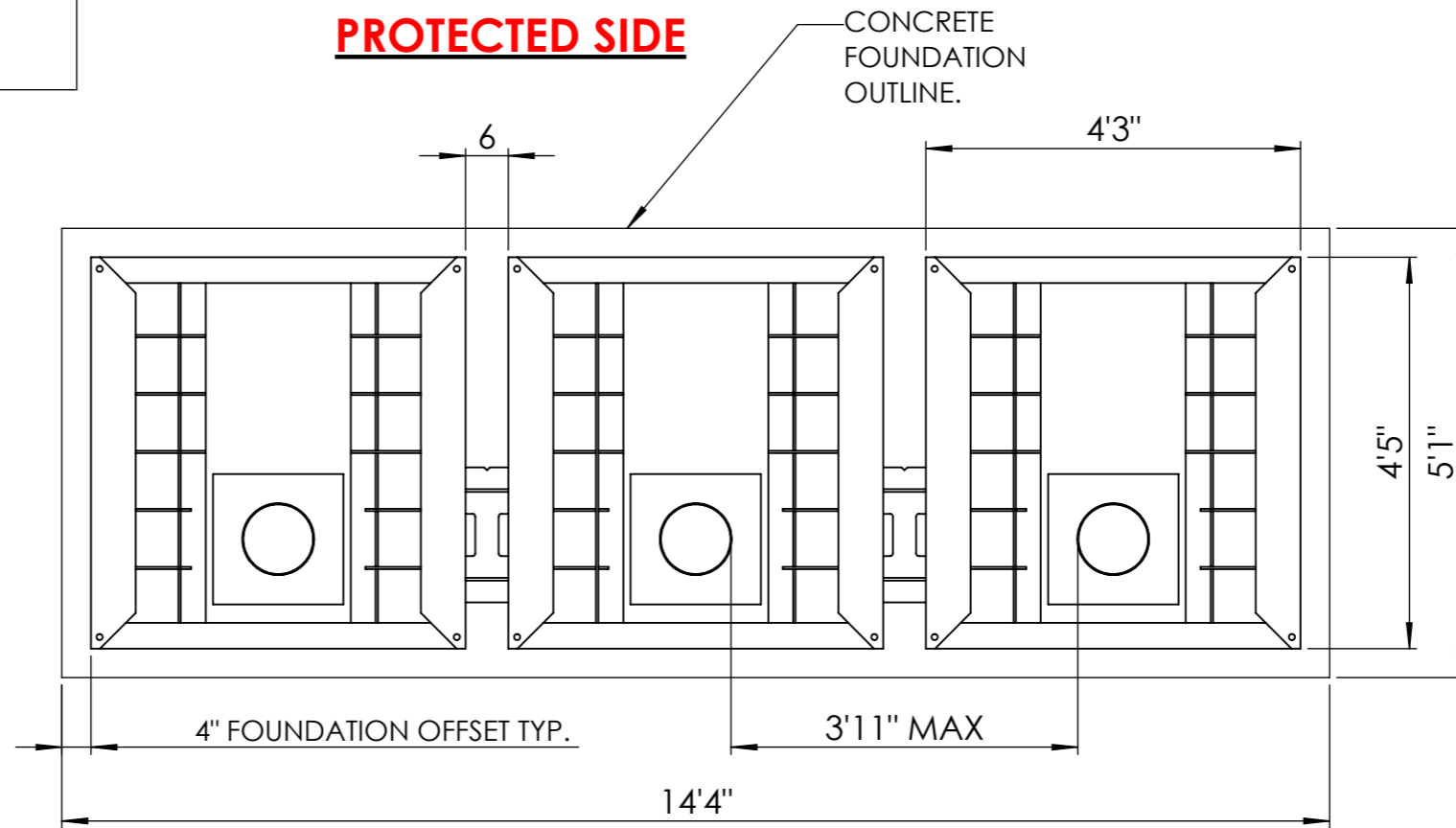


NOTE: ANGLED, STEPPED AND SLOPED BRACKETS AVAILABLE TO ENABLE FRAMES TO BETTER FOLLOW CURVES AND GRADIENTS. CONTACT MARSHALLS FOR FURTHER DETAILS.

PRODUCT CLASSIFICATION:
B-FOUNDATION/PASSIVE/BOLLARD
PERFORMANCE RATING:
IWA14-1:2013 BOLLARD
V/7200[N2A]/80/90:5.7

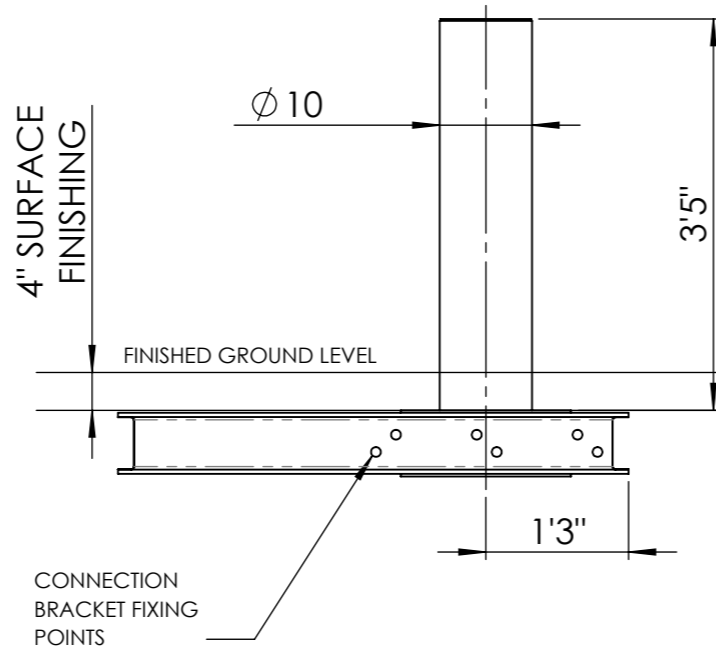
**TOP VIEW
3-UNIT ARRAY
SCALE (1:25)**

PROTECTED SIDE

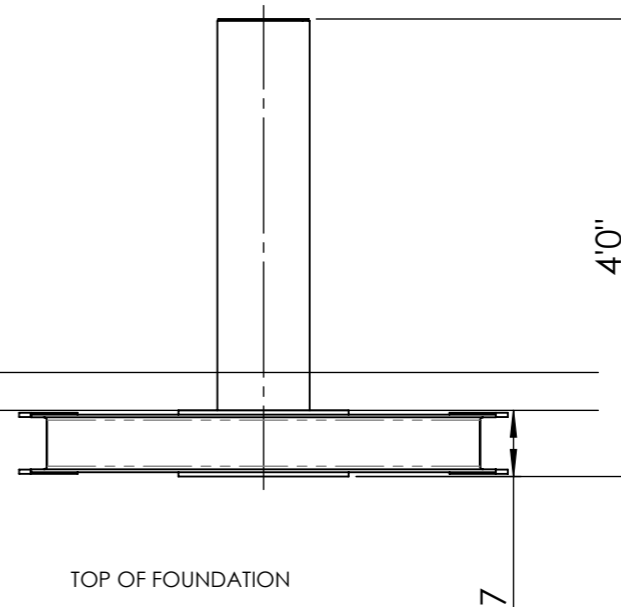


NOTE: 45° AND 90° FRAMES AVAILABLE. FRAMES CAN ALSO BE PROVIDED WITH A REMOVABLE CORE. BLANK FRAMES CAN ALSO BE PROVIDED WHERE FEWER THAN 3 BOLLARDS ARE REQUIRED.

SIDE VIEW



FRONT VIEW



THIS DRAWING IS THE SOLE PROPERTY AND COPYRIGHT OF MARSHALLS STREET FURNITURE AND MAY NOT BE DISCLOSED TO ANY THIRD PARTY OR REPRODUCED IN WHOLE OR IN PART WITHOUT THE PRIOR WRITTEN CONSENT OF AN AUTHORISED REPRESENTATIVE OF THE COMPANY. UNAUTHORISED PARTIAL OR COMPLETE REPRODUCTION, IN EITHER TWO OR THREE DIMENSIONAL FORM, MAY RESULT IN LEGAL ACTION. THE USE OF THIS DRAWING TO OBTAIN QUOTES FROM OTHER SUPPLIERS OTHER THAN MARSHALLS URBAN STRUCTURES MAY RESULT IN LEGAL ACTION.

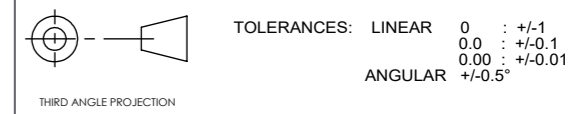


Premier Way
Lowfields Business Park
Elland
Halifax
West Yorks
HX5 9HT

TEL: 0870 990 7504

EMAIL: info@marshalls.co.uk

- NOTES:**
1. ALL DIMENSIONS ARE IN FEET AND INCHES UNLESS OTHERWISE STATED.
 2. DO NOT SCALE DRAWING.
 3. ALL CONCRETE TO BE IN ACCORDANCE WITH BS 8500
 4. MIXES TO BE REINFORCED CONCRETE - C30/C40
 5. ALL MATERIAL & WORKMANSHIP TO BE IN ACCORDANCE WITH RECOMMENDATIONS OF BS-EN 1992 EUROCODE 2
- Foundation sizes given are for customer guidance and suited to sub-soils with good load bearing capabilities. Where adverse site conditions are met professional advice to be sought.



| Rev | Init | Revision Notes | ER No. | Date |
|-----|------|----------------|---------|----------|
| A | MB | FIRST ISSUE | 20-0712 | 04/11/20 |
| B | - | - | - | -/-/- |
| C | - | - | - | -/-/- |
| D | - | - | - | -/-/- |
| E | - | - | - | -/-/- |

PRODUCT TYPE:
SHALLOWMOUNT BOLLARDS

IMPACT RATING:
72-50

SLEEVE DETAIL:
VARIOUS SEE NOTES

PRODUCT RANGE: RHINO GUARD

BRACKET WEIGHT: 66 lbs

BOLLARD WEIGHT: 1461.72 lbs

SHEET TITLE:
RhinoGuard IWA-14 72/50 SM Frame Ø244 Core PC

DRAWING NUMBER:
CD-RG-SM-00023

| | |
|-------------------------|------------------------|
| DRAWN BY MB | REVISION [A] |
| DATE 04/11/20 | |
| SCALE 1:20@A3 | SHEET 1 of 1 |