

1

2

3

4

5

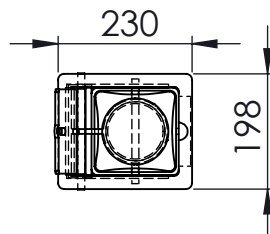
6

A

B

C

D



Ø 114

1009

501

TYPICAL GROUND LEVEL

150 SQ.

500 SQ.

PRODUCT SPECIFICATION

MATERIAL:

CORE: GRADE S235 MILD STEEL, 5mm WALL
 SOCKET: GRADE S235 MILD STEEL
 SLEEVE: GRADE 316L STAINLESS STEEL, 2mm WALL

FINISH:

CORE & SOCKET:
 HOT DIP GALVANISED -
 BS EN 150 1461 (1999),
 SLEEVE:
 BRUSHED SATIN

WEIGHT:

SOCKET: 14.8KG Approx
 CORE: 9.5KG Approx
 SLEEVE: 6.3KG Approx

EXTRAS:

Bollards in this range can come with the following:
 - Flat or semi-domed cap
 - Bespoke grooving
 - Hazard class 2 reflective banding

LIFT OUT INSTALLATION:

1. Determine suitable location for socket. Perform visual checks, scan and check drawings for utilities/live cabling.
2. Evacuate cubed foundation for socket. (Guidance: See Drawing)
3. Locate socket centrally in evacuation hole, cast C30 concrete or similar medium slump around socket. Ensure socket is vertical in all planes.
4. Allow the foundation to cure. Concrete should be protected by polythene during the first 24 hours following installation.
5. Once foundation has cured place and lock bollard in socket.

Foundation sizes given are for customer guidance and suited to sub-soils with good load bearing capabilities. Where adverse site conditions are met professional advice to be sought.

For operation and maintenance please refer to the **Marshall's Street Furniture Maintenance Guide**.

A	FIRST ISSUE	05/11/13	MB
RevNo	Revision Note	Date	Signature

Title:
RS001 114x1000 WSDC LO STANDARD

Drawing No:
PS-RH-BL-10179

DO NOT SCALE DRAWING

Scale: N.T.S. Sheet: 1 of 1

A4

1

2

3

4

5

6